



## Structured Water is Amazing

Below are a few of the benefits of highly structured water, produced by Clayton Nolte and Natural Action Technology's water structuring machines.

## **Biophoton Structured Water Is Rich in Benefits**

Biophoton structured water has numerous benefits. For quite a few years now I have been experimenting with water structuring devices.

Structured water is water in nature. If you take ten gallons of water and pour it in a mountain stream at the top of the mountain and then collect it at the bottom, the water will be structured.

- Structured water is free of memory
- Structured water has a balanced pH

When you increase the structure of water you automatically increase its biophoton content.

Biophotons are the life force energy of water. This was documented by Mr. Excelex, the inventor of the Hexahedron 999.

Using an electron microscope called a Somatoscope, Mr. Excelex found that when he highly structured water, the number of biophotons observed at 30,000 times magnification went from below 20 to 350 or more.

When minerals are present in the water, Mr. Excelex found that water can hold its structure for up to 3 months.

It can hold it even longer when Ionic Sea Minerals are added to the water.

## **Benefits of Biophoton Structured Water**

### **1. Better, smoother taste**

I have found that water tastes noticeably smoother when it is structured. I have had people taste a glass of water, then stir the water with a Grander "pen" to structure it.

Most everyone commented that the biophoton structured water was smoother. The difference was obvious!

Structuring coffee or tea improves its aroma and taste. People tell me that it also mellows out cheap wine, giving it more of an aged taste.

### **2. Sediment disappears from laundry water**

Sometimes when you do a load of laundry it will leave behind a gritty sediment. Since biophoton structured water is wetter (it can hold more mineral), it tends to clean whatever it comes in contact with, including sediment left behind after the rinse cycle.

### 3. Plants thrive with structured water

- Plants thrive with biophoton structured water
- A higher percent of seeds sprout
- Plants mature quicker
- Leaves and fruit are larger
- Flowers produce more blossoms with brighter colors
- In my experiments, yields increased by 7% to 10%
- In tests on strawberries and corn, brix increased by 25%
- In corn silage, biophoton structured water produced a higher Relative Feed Value, worth \$75/acre
- Since nutrient uptake is increased, plants require less fertilizer
- Plants are healthier, making them more resistant to insects and disease
- Fruit and vegetable shelf life is increased
- Produce tastes better, attracting a better market

### 4. Regenerates life in man and animal

Besides all this, fruits and vegetables grown with biophoton structured water are filled with biophotons, which are a true "food" for the body. When we consume food and water high in biophotons, our body is able to assimilate them into our cells.

Biophotons are the way the body communicates. For instance, when our DNA need to send instructions to Enzymes, biophotons are the body's "fiber optic" network. If biophotons are lacking, the enzymes are there, but don't know what work they are to do. This is one reason why a high level of biophotons in the body helps the body to regenerate itself.

Biophotons are the life force of the body. A healthy newborn emits 200 to 220 biophotons per second per square centimeter. Adults emit 80 to 120. A senior adult will transition from 60, to 20, to 10, and then none. When that happens, they die.

Someone at 50 or 60 years old that has 60 Biophotons per second per square centimeter may very well be able to reverse the degenerative process, and go back up to 80, 120, or even 150 Biophotons per second per square centimeter. This can be done by eating foods loaded with Regenero-Active Biophotons, and drinking and bathing in water loaded with Regenero-Active Biophotons.

A Gas Discharge Visualization (GDV) camera is able to capture the biophoton radiance of the body and of substances. Compare the radiance of tap water (left) to water without Ionic Sea Minerals (center), and with structured water with Ionic Sea Minerals (right). This shows that Ionic Sea Minerals have an inherent radiance.



A Natural Action Technologies water (NAT) structuring unit was used for the above test.

After individuals drank two 8-ounce glasses of water structured with NAT water structuring units, GDV photos showed an increase in biophotonic energy for those individuals.

See the picture on the left for an idea of what a person's radiance looks like when using GDV photography.

### 5. Life force energy transfers to nearby liquids

Biophoton structured water will significantly enhance the growth, production, longevity and life force energy (bio-photons) of everything in the Structured Water's path. Entrainment is a phenomenon where biophoton structured water uses its energy to structure water within a few feet, just by association.

Entrainment is amazing to watch. I have done taste tests with structured water, and people easily notice that biophoton structured water tastes smoother. But when I set a glass of structured water next to a glass of unstructured water, in less than a minute it will also be structured.

The point is, when you drink a glass of biophoton structured water, it **almost instantly structures the water throughout your body**, as observed by a GDV camera mentioned above.

What happens when you put a bottle of structured water in your refrigerator? It increases the biophoton energy in everything in your refrigerator!

## 6. Better wheat grass

A friend of mine did a test on trays of wheat grass he grows for juicing. He watered one tray with tap water, one tray had Ocean Trace added to tap water, and the third tray had tap water structured by a water structuring machine.

At the end of 3 days the biophoton structured water plants were taller than the other 2 trays. Both the Ocean Trace tray and the structured water tray were a darker green.



By day 7 the Ocean Trace tray had caught up with the structured water tray.

By day 8 the Ocean Trace tray was noticeably taller, and the grass tips in the structured water tray had started to yellow (they ran out of nutrients). The Ocean Trace tray had a better, more mellow flavor than the other 2 trays.



## 7. Biological purification of water

Hans G. Schlegel, in his book General Microbiology, found that when you alter the cluster structure of water by highly structuring it, bacteria clusters are fragmented and scattered, **creating colonies the size of a pin point**.

Johann Grander, creator of the Grander Water Revitalizer, says that once Water Revitalizing has begun, within 5 days, the "wild" colony clusters in the water have transformed to tiny pin points.

Once bacteria have been transformed to pin points, they can't hurt us, because:

- Pin points won't form back into wild colonies, even when a culture medium is added to the water
- When ingested, body temperature and stomach acid immediately kills these pinpoints of bacteria
- 

Bacteria pin points have a voracious appetite. They quickly break down the organic content dissolved in the water, thus purifying the water.

Within a few weeks the pinpoints exhaust their carbon food supply and die. The water is biologically pure, since bacteria are unable to reproduce in an environment where the Assimilable Organic Carbon (AOC) level is below 10 micrograms per liter.

This is great news for closed heating or cooling systems, where microbe contamination can be a problem. Another application is that drinking water can be stored for years at room temperature, preserved in a bacteriologically stable state without the use of chemical additives.

My experience is that all highly structured water creates these pin points of bacteria, including NAT water structuring units.

### **When Pinpoints can't form**

The two cases when pin points are not able to form is when the water has a high level of disinfectants (i.e. chlorine) or heavy metals, since these have already killed the bacteria.

Refrigerated water can take many days for pin points to develop, since in a cold environment bacteria can take as much as 18 hours to divide even a single time.

## **8. Cleaner ponds, lagoons, and septic tanks**

**Because pin point bacteria have a ravenous appetite**, biophoton structured water can help to add clarity to ponds, and help to clean sludge from the bottom of lagoons and septic tanks.

People have reported that within a couple of weeks of installing units on their pond, the pond became clearer. They could even see the fish on the bottom of the pond.

One man used one to treat the water in his lake. He measured the pathogen level close to the structuring device, and found them to be 1/6th the level farther away. This same cleaning action is seen in animal watering tanks as well.

## **9. Minimal chemicals needed for Swimming pools**

It has been found that bacteria pin points are much more sensitive to chlorine than wild clusters of bacteria. This allows one to reduce the chlorine content of pool water to the minimum limit of 3 mg. per liter and still achieve effective sanitation.

In my 8,000-gallon pool, I added 1 gallon of Ocean Trace concentrated sea minerals for every 4,000 gallons of water.

This allows the water to structure at an even higher level. I simply kept the pH in balance, added a 3-inch chlorine tablet twice a week and shocked every couple of weeks.

This kept the pool sparkly clean. And no chlorine smell or taste, even after shocking the pool.

### **Why structuring works in a pool**

Biophoton structured water substantially increases the stable oxygen and bio-photon content of the pool water therefore increasing aerobic bacteria (good bacteria) and decreasing anaerobic bacteria (bad bacteria).

Biophoton structured water is "wetter" water. It has more free hydrogen bond points, meaning it can hold more minerals. It actually re-absorbs minerals off of pool walls and parts.

After just 3 weeks of structuring our pool water, it had cleaned up our old pool ladder to look brand new, and started removing the coat of minerals from our pool liner. Structuring the water eliminates the need to use a chemical scale remover.

Our structured pool water was sparkly clear, clearer than any pool water I have ever seen. We no longer needed a water clarifier.

Surprisingly enough, within 4 days of structuring our pool water the algae problem we had been battling totally disappeared. We never had to use an algaecide again. Structured Water will reduce the need for chemicals and this will be dependent on the circulation of your pool.

Besides all this, our pool water transformed dried out skin into soft, smooth skin. When you are in your pool you will feel very energized and only that which is good for you will enter into your cells.

## **10. Better hydration**

In Clayton Nolte's water structuring devices, specially tuned geometry creates an energy environment for water to structure itself.

This gives water:

- A lower surface tension
- Better hydrating properties

This geometric technology breaks up large low energy water molecule clusters into smaller high energy clusters.

This innovative technology eliminates negative energy patterns (sometimes called the memory of water) and redefines the water's natural healthy energy pattern.

## 11. NAT structuring units don't wear out

In everybody's home are devices that you have to constantly tend and repair.

But when you buy a water structuring device, it is made to last a lifetime, since it has no moving parts. The water itself is the moving part; it is the machine.

## 12. Increase in milk production

Tests have been done giving dairy cattle structured drinking water. Within weeks, milk production generally increases by 3% to 7%, plus the animal is healthier.

Can you imagine? Install water structuring units for your livestock drinking water, and reap the profits from then on.

Plus, farmers report that their water tanks stay cleaner, with less algae.

## 13. Everything takes less water

When water is structured, many things take about 30 percent less water. Less water for the garden or farm, animals are better hydrated and require less drinking water.

Because the water is wetter and can hold more, less water is needed for cleaning.

## 14. Better patient health

**Tim Toula** of Natural Action Technologies writes:

"Like many practitioners of acupuncture, chiropractic, and nutritional/herbal techniques, I have searched the world studying and practicing in depth good health with many amazing practitioners and patients."

"Immediately with the structured water devices, we noticed improved flavor changes to many liquids.

More interestingly, all kinds of Chiropractic test points like...ICV, yeast, and allergy points instantly improved without any adjustments, needling, herbs, etc... just a glass of biophoton structured water!"

"As you think of drinking plain water, making smoothies, drinking Coca-Cola, wine, or, beer now, think of instantly and easily, improving naturally the flavor and strengthening simultaneously your internal body energetics through these structured water devices."

## 15. Biophotons Help Degenerative Nerve Diseases

The following is according to Cherie Calbom, the Juice Lady.

"If you suffer from a degenerative nerve disease such as Parkinson's, MS, or Huntington's Disease, juicing veggies could be an answer.

**Failure of cell mitochondrial function is a big contributor to this condition.** Every cell in the body has a little 'biological spark-plug' called mitochondria. These mitochondria are responsible for enabling the cell to process oxygen properly and to supply energy fuel in the form of ATP for all biological-chemical processes.

Restoration of this function by supplying specific enzymes to restore mitochondrial function has proved effective in reducing the symptoms of Parkinson's disease.

Raw foods such as salads and veggie plus raw juices can be very helpful because they are rich in biophotons--the light rays of energy plants absorb from the sun. **Biophotons feed the mitochondria.** I would recommend that you drink 3-4 glasses of veggie juice per day."

As I see it, since research has shown that:

- Biophotons feed mitochondria
- Mitochondria help to restore mitochondria function
- This in turn helps reduce symptoms of Degenerative Nerve Disease

Therefore, I believe biophoton structured water produced by a water structuring device may also prove quite helpful for those suffering with degenerative nerve disease.



## **16. Structuring restores life to recycled water**

Water that is used over and over is dead water; water void of free stable oxygen, void of life force energy and overburdened with memory.

Water structuring can restore this water, especially if at some point the water is oxygenated.

## **17. Reduction in e-coli and other dangerous bacteria**

Effects of pouring e-coli loaded water through a Dynamically Enhanced Portable Unit.

This report and lab test is about a 28-foot-deep ground water well with severe fecal contamination from an unknown source.

The well water was poured through a DE Portable Unit. The lab report showed that E. coli was reduced by 25% with just 1 pass through the NAT Dynamically Enhanced Portable Unit.

## **18. Structured Water vs. Ionized**

### **Biophoton structured water**

ALL that passes through the structured water unit is changed at the molecular level. In this structuring event everything is organized and coherent.

One of the first things you will notice of your surroundings is calcium buildup falls away and everything is sparkling clean, as it will also be within you. When calcium is structured, it no longer has the electro-chemical ability to adhere to itself, much less what it comes in contact with.

### **Ionized water**

This is best described as electrocuted water (water that is pulled apart by electricity). If you refer back to the previous question regarding what is absorbed into the cells of the body (the music and vibrations), I personally would not want to absorb the chaotic energy of ionized water.

## **19. Restoring life to reverse osmosis water**

Reverse osmosis water is empty, dead water, potentially harmful to health.

When you add Ionic Sea Minerals to reverse osmosis water and structure it, the life and structure is restored to the water. It then becomes one of the best waters available. Harmful elements are gone, wonderful life-giving elements are present.

Clayton Nolte, inventor of NAT Water Structuring Units, says: "I would add a liquid monatomic mineral supplement (minerals in ionic form) to any water.

There are very few waters on this planet that contain all the minerals essential to life and if you're going to add minerals, use monatomic."

I agree. In fact, Clayton Nolte is now a distributor for Ionic Sea Minerals.

## **A List of Benefits of Structured Water**

- Fresh tasting invigorating water
- Low surface tension, less than 46 dynes per cubic centimeter
- Greater density
- Wonderful showers & baths – no chlorine smell
- No more dry, itchy skin
- No effects from sunburns
- Less soap necessary when washing
- Hair & skin rinses cleaner and feels better when washed
- Healthier plant growth – green lawns – lower freezing point
- Reduces chlorine requirements for spas & swimming pools
- Reduces corrosion & deposits in pipes
- Increases longevity of all systems that use water
- Reduces odors around water use facilities
- Improved growth of crops with increased biomass (27% to 40%)
- Lower freezing point so plants can be sustained at lower temperatures
- Removes existing calcium and aragonite deposits
- Solvency of the water increases profits from sales of coffee & juice
- Healthier gardens & household plants
- Healthier farm livestock, domestic pets & fish

- Biophoton structured water increases minerals, medications or any other supplement absorption to 100 percent
- Eliminates polluting salts, chemicals or corrosive byproducts
- Improved aerobic bacterial activity in septic & sewage systems
- Biophoton structured water is loaded with negative hydrogen ions i.e. "Hydrogen is the fuel of life."
- Assists in the release of healthful vitamins & minerals to all life
- Biophoton structured water contributes to the solution & well-being of all
- Biophoton structured water is the ultimate food
- Biophoton structured water is the Greatest medicine
- Biophoton structured water reduces the energy required for hydration
- Biophoton structured water remains so through boiling

## Scientific proof of higher energy in structured water

The following results from "Scientific Tests Done on Structured Water" were arrived at from the AGALIS Lab, an Independent German Lab.

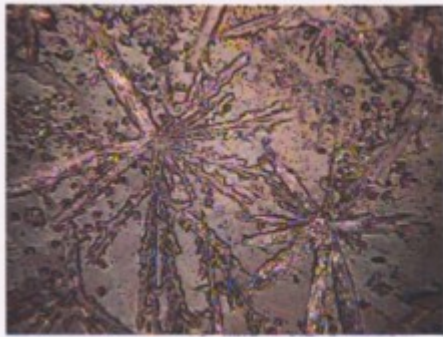
Crystals were formed from the extraction of distillate residue, which was previously incinerated and calcinated.

This test procedure results in crystallization pictures of the samples, which allows reaching a conclusion about the quality of the life force (biophotons) in the samples.

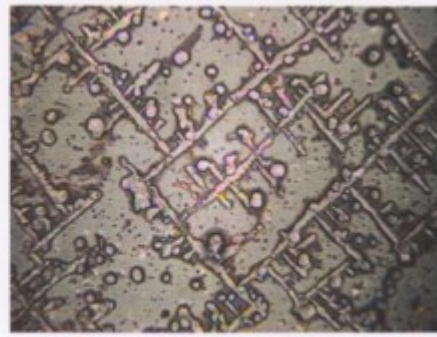
This lab's report is scientific proof of the positive energy balance and quality of water created by Natural Action Technologies Water Structuring Units.

Their report is also proof that highly structuring water does create hexagonal water, which is a balanced water.

In the structured water pictures, there are no cross-shaped, dense, angular structures to be seen in the entire picture, which points to the conclusion that the solubility of the minerals in the water was significantly increased.



Sample Structured Water Magnified 400x



Sample: Neutral Sample Bottighofen, Magnified 400x

There are more star-shaped 60-degree angle structures to be found here. This demonstrates there is a similarity to a good to very good spring water quality.

The surface formation of the crystals has increased sharply in comparison with the neutral sample, which indicates a considerable increase in bioavailability of the minerals in the sample.

The treated sample is more suitable as a food product since it provides more trace elements and minerals than the neutral sample.

At the same time, the general level of vitality has increased considerably. The energy balance is higher than that of the neutral sample and is generally considered to have a positive value.

The sample shows a significant surplus of energy.

One result of structuring water is that technical equipment operates perfectly using this quality water. The technical quality of the water has increased tremendously while the risk of calcification has been reduced to a minimum.

This is a considerable advantage for consumers in terms of maintenance and durability of their devices when using structured water units.

## **DYNAMICALLY ENHANCED UNITS!**

You now have the choice of purchasing the original units, or the Dynamically Enhanced Units with all the synergistic properties they bring to the structured water machine units.



The line of Dynamically Enhanced Units has a flow-form inside that is the same structure and size as the flow-form in the current units, but is made from a combination of proprietary materials that dynamically enhance the energy of the unit and create a static energy that exists even before the water flowing through the unit is structured.

Nothing physical is being deposited or physically added to the water by the units.

What happens is that the structured water is being dynamically and energetically enhanced by the energy in the added materials.

Here is a list of the energetic properties of the materials in the new Dynamically Enhanced structured water machine units:

- Energetic Properties that restore our bodies, and the environment.
- Energetic Properties that have the ability to neutralize water from almost all inorganic compounds, including pesticides, bacteria, nitrates, free radicals, heavy metals and other harmful organisms.
- Energetic Properties that neutralize the negative impact of electromagnetic fields.
- Energetic Properties that increase immunity to illness and disease.
- Energetic Properties that rejuvenate the skin.
- Energetic Properties that enhance and increase the energy of the structured water.
- Energetic Properties that purify water.



# Structured Water Machines

Thank you for your interest in the water structuring units produced by Natural Action Technologies, Inc. and inventor Clayton M. Nolte.

Here are the NAT products that you can purchase from us. **Use discount code NAT10 for 10% off!**



**1. Portable Unit Blue - \$349**

---



**1a. Portable Unit Gray - \$299**

---

Just pour a liquid or beverage through the funnel end of the unit into a glass container to structure that liquid. Can be used to structure water, coffee, tea, coffee, wine, etc.

Structuring of beverages may provide a mellower taste. Also, it may help to neutralize toxins. Flavor and taste improvements often occur when the liquid is passed through the portable unit multiple times.

The portable unit may be cleaned by soaking it in a bath of water and apple cider vinegar, boiling water, or running it through the dishwasher.

The unit may be stored either spout up or spout down. All Natural Action Technologies water structuring units come with a 90-day satisfaction guarantee, plus are guaranteed for life against manufacturer defects.

Avoid leaving this unit in freezing temperatures with residual water inside as this may impair its function. Avoid dropping the unit as damage may result.



## 2. Shower Unit - \$299

---

This unit has a 6 ball flow-form. Weight: 7.5oz Length: 5"

### Uses for the Shower Unit:

- For showering and bathing in Structured Water
- For filling water containers
- Can be used as a portable unit
- Take it with you when you travel



## 3. HD9 Under Sink Unit - \$599

---

The Under the Sink Unit is a wonderful structuring device for the kitchen, bathroom or workroom, designed to be installed under the sink and to produce delicious, energized tap water. Installs easily under any regular sink in kitchens and bathrooms.

This structured water can be used to wash your hands or the dishes, cook with or make enjoyable beverages, or simply for enjoying a tall, cool drink of tasty water.

It comes with pre-installed 1/2" male NPT nipples for easy installation below the sink. It also comes with a mounting bracket and a stainless-steel hose, offering a variety of mounting options.

Please let us know if you would prefer the unit manufactured to fit a Reverse Osmosis unit.

### Uses for the Under the Sink Unit

- Washing dishes
- Washing produce
- Water for cooking
- Water for filling containers, and many other uses



---

#### **4. HD-24 House Unit 3/4" or 1" NPT - \$1,499**

This unit is designed for maximum performance for homes large and small. It's available in 1"; or 3/4"; NPTF fittings that are adaptable to any home or other piping configuration. Please let us know if you would like the 3/4" fittings. Otherwise, it will ship with the 1" fittings.

Enjoy all the benefits of revitalized water for cooking, drinking, showers, laundry, gardening, pets and so much more. With a whole house unit, you will have structured water at your fingertips throughout your home. Everyone benefits from the energetic properties.



---

#### **4a. Swimming Pool 2" NPTF - \$2,400**

Commercial Grade Structured Water Swimming Pool Unit. Comes standard with 2" NPTF adaptable to any fitting type. Reduce chlorine/chemical use, reduce chemical harshness, and soften your pool water for a more enjoyable swimming experience.

---