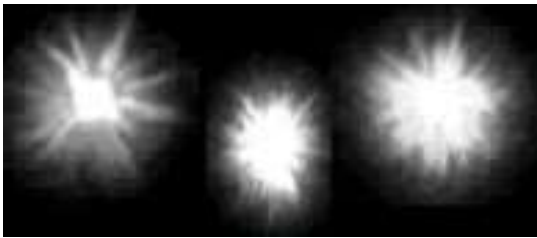


## Why are biophotons important?

Natural Action Technologies' water structuring machines increase the regenero-active biophotons (biological light) in water molecules. These biophotons are highly structured, and have a six-pointed star in their center, surrounded by hexagonal geometries.

In the picture below, you see actual pictures of biophotons taken with an electron microscope. With the higher level of structure in our water, a large percentage of biophotons are **regenero-active**, having the ability not only to sustain life, but also to regenerate life. This increase in regenero-active biophotons actually strengthens hydrogen bonding, increasing capillary effect.



### Observed effects of water structuring

- ★ Provides better hydration of cells
- ★ Facilitates better absorption of nutrients
- ★ Helps cells eliminate waste material
- ★ Softens the water without salt

Adding Ocean Trace™ to water and running it through a NAT water structuring machine produces water that will make a difference in your animals!

## Ocean Trace™ increases the effectiveness of the NAT machine

Just as it first takes a particle of dust to form a rain drop, biophotons are attracted to the molecular sized minerals found in water. The Natural Action Technologies machine does the best when the complete set of minerals found in the ocean are present in the water.

However, ocean water is high in chlorine, and chlorine de-structures water. In Ocean Trace™, 90% of the chlorine and 99% of the sodium solidify during evaporation and are removed. This is why Ocean Trace™ is such an incredible complement for the NAT water structuring machine.

In a test done on ¼ million chickens, when Ocean Trace was added to the water at 1 to 1,250, mortality rates fell around 50%, as compared to the control. Feed conversion rates improved and the chickens grew an additional 3 ounces in a 43-day grow-out.

But when we injected the Ocean Trace™ at 1 to 2,500 and then ran it through a water structuring machine, mortality rates dropped more than 80%. This demonstrates the synergistic effect of using Ocean Trace™ and water structuring together. Just imagine what this water treatment system could do for your animals!

AG-USA™ makes no warranties of any kind, express or implied with respect to Ocean Trace™. Manufacturer's and seller's obligation is limited to the replacement of product for defective material only. Neither manufacturer nor seller shall be liable for any injury, loss or damage directly or consequently arising from the use, misuse or inability to use the product.



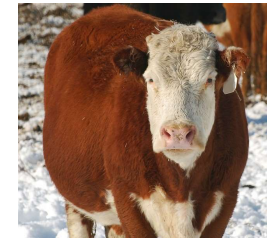
(888) 588-3139

[www.AG-USA.net](http://www.AG-USA.net)



## Sea Minerals

for Animal Drinking Water



You can provide your animals with exceptional drinking water by using the AG-USA program:

1. Add Ocean Trace™ to the water.
2. Pass the water through a NAT water structuring machine.

Ocean Trace™ was formerly  
**OMRI listed**  
for animal consumption

## IS GOOD DRINKING WATER THAT IMPORTANT?

Many Americans have realized that good drinking water plays an important role in maintaining good health. We buy bottled water, or filter our water to get rid of chlorine and other unwanted chemicals.

But have we ever thought that poor water quality may be adversely affecting our animals?

AG-USA™ would like to help you dramatically improve the quality of the water you give your animals. We are currently using our cutting-edge technology to improve water for humans, and now it is available for livestock.

**Our program is simple, yet effective.  
Here is what we recommend:**

**First**, inject Ocean Trace™ into the water, or add it manually.

Please contact us if you would like to purchase an injector. We can help you find a unit that is right for you.

### WHY OCEAN TRACE™?

The ocean contains all 76 minerals found in nature in almost the exact proportions found in blood plasma. Is it any wonder that sea salt is rapidly gaining popularity as a replacement for other forms of salt?

In producing exceptional drinking water for humans, we filter the water, add our ocean minerals, then run it through a NAT machine. Your farm animals now have access to our exceptional drinking water technology!!!

### WHAT IS OCEAN TRACE™?

We take 100 gallons of ocean water and evaporate it down to one gallon. In the evaporation process, most of the sodium chloride solidifies and is removed, leaving behind a dense sea mineral solution. We add water to rehydrate crystalized mineral.

### RECOMMENDED AMOUNT FOR ANIMALS

Inject 1 part Ocean Trace™ into 1,500-2,000 parts water.

Ocean Trace™ may also be added to water manually. Just calculate the combined weight of the animals drinking from the water, then divide it by one of the 3 weight amounts below to get actual number of ounces, tsp., or cc needed.

1 ounce (30 cc) daily for every 1,000 lbs. of combined animal weight.

1 tsp. daily for every 167 lbs.

1 cc daily for every 34 lbs.

If you choose this method, make sure to maintain a minimum of 1,500 parts water to 1 part of Ocean Trace™.

### RECOMMENDED AMOUNT FOR FOWLS

How much Ocean Trace™ (OT) is used for a 31,000-bird chicken house where they drink approximately 45,000 gallons of water in a 40-day grow-out?

At 1 to 2,000, you will need 12 gallons. This is around ½ oz. of Ocean Trace™ per 1,000 lbs. of bird per day.

Ocean Trace™ may also be used for geese, ducks, and turkeys.

**Second**, running the water through a NAT water structuring machine boosts the results.

The Natural Action Technologies' device induces a unified field of energy in the water molecules, utilizing the array of minerals in the water to draw in biophotons.

The NAT unit re-programs and highly structures the water.

### NAT Water Structuring Machine

No external power needed, has no moving parts, and no noise.

Zero maintenance required. No magnets. Fast and simple installation.

### **Cattle in East Jordan, MI Greg Niewendorp**

I used approximately 2 tsp./cow/day of Ocean Trace™ in my cattle's water, starting August, 2006, through the winter, as part of a supplement package. The result of this supplement package? I had the best-looking cattle I have ever seen.

They had the best shed out and were the slickest looking even before they went out on grass. I have never had this happen before. It is the minerals in the grass that usually gets them to really start shedding. New-born calves bounce up off the ground in 15 to 20 minutes, and start sucking immediately. "Ocean Trace™ is a part of my package that I wouldn't even consider doing without. My program has eliminated my need for vaccines and antibiotics, and results in exuberant herd health."

You can learn more about Greg by doing an internet search on his name.